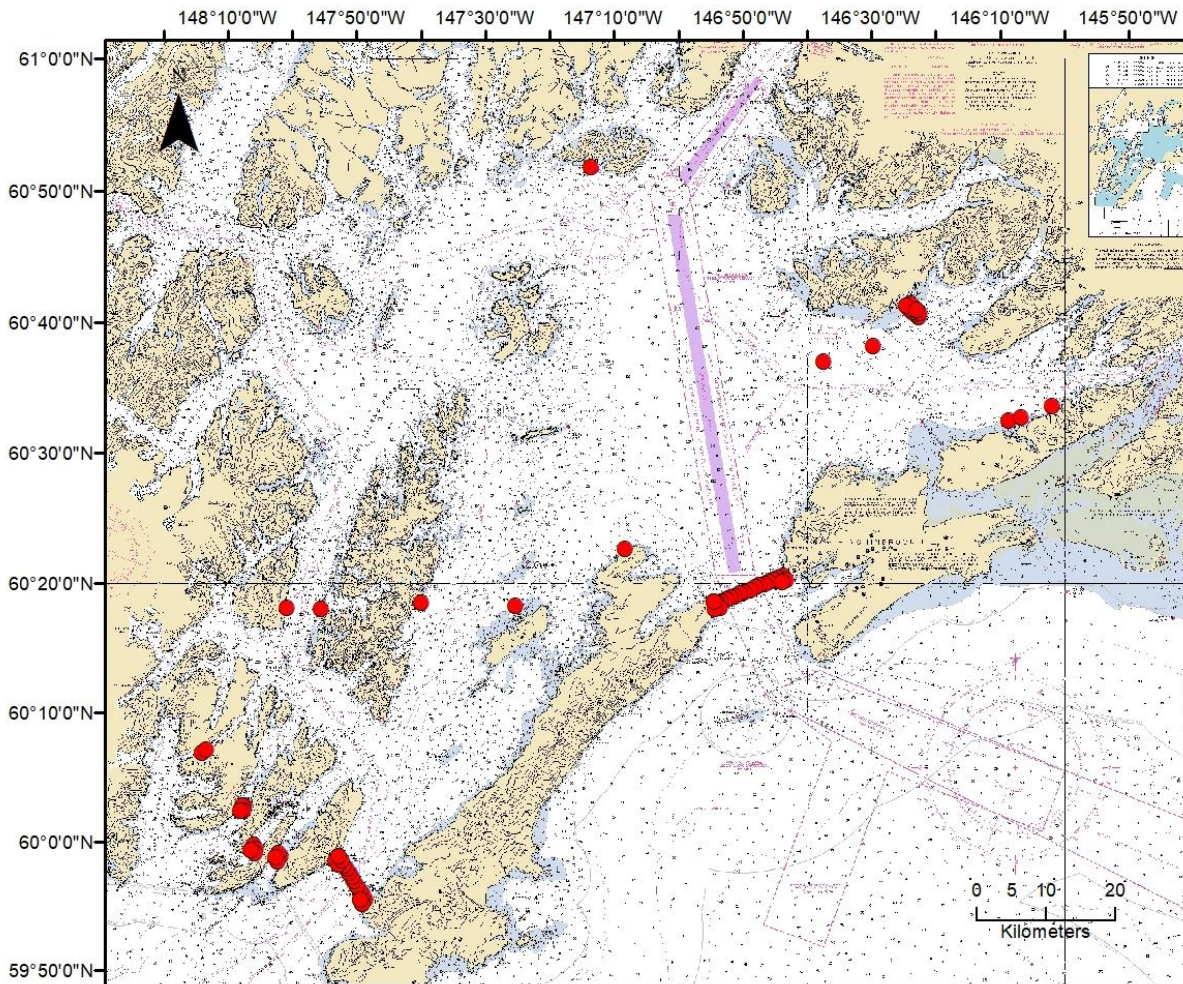


Please be advised, during the 2014 pollock fishery, several of the PWS acoustic receiver moorings were snagged and damaged. Please use the following maps and tables of locations to avoid contact with the moorings.



Map of PWS acoustic receiver moorings (red dots). Moorings are located near Hinchinbrook entrance, Montague Strait, the southwest passages (Latouche, Elrington, Prince of Wales, and Bainbridge), Canoe Pass/Cedar Bay, Red Head, Gravina, Glacier Island, NW Montague Strait (3 moorings), and Knight Island Passage (2 moorings).

Note: a more detailed map of the single mooring at Glacier Island/Chamberlain Bay is not provided here to save space. Please refer to the above map and the attached table to avoid contact with this mooring.

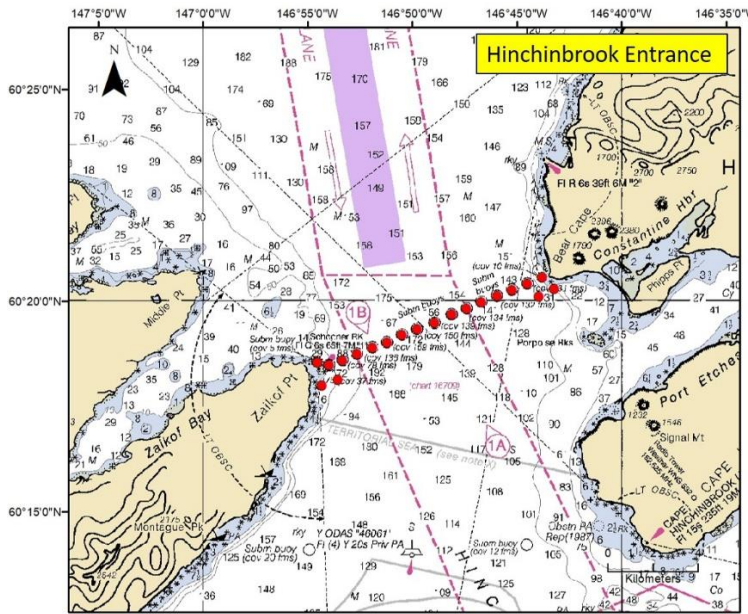
*****The point of contact for these moorings is Mary Anne Bishop (907) 424-5800 x 228 or Ben Gray (907) 424-5800 x 234 *****

PRINCE WILLIAM SOUND ACOUSTIC RECEIVER MOORINGS

***The point of contact for these moorings is Mary Anne Bishop (907) 424-5800 x 228 or Ben Gray (907) 424-5800 x 234 ***

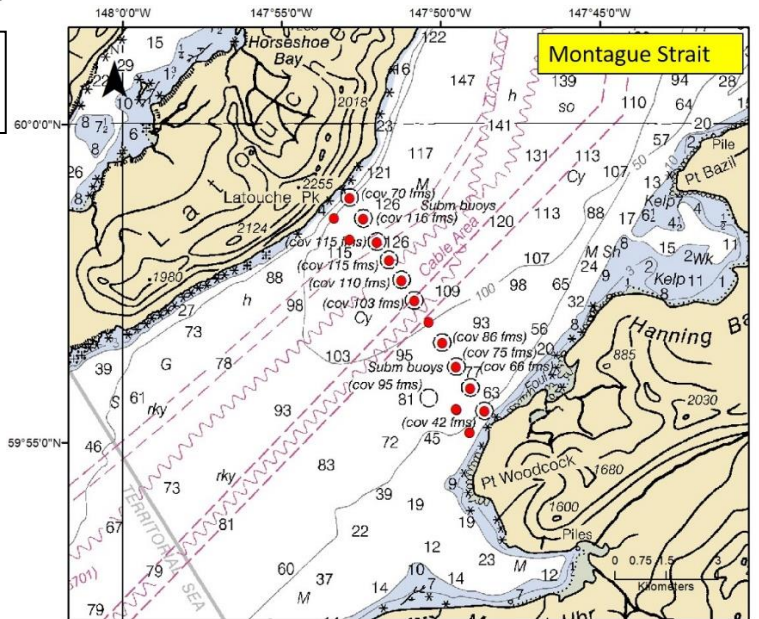
STN NAME:	POSITION: (Degrees Decimal Minutes)	WATER DEPTH:	TOP FLOAT DEPTH:	ARRAY NAME:	
H01	60°20.550'N, 146°43.824'W	98 feet	66 feet	Hinchinbrook Entrance	
HA	60°20.274'N, 146°43.248'W	591 feet	532 feet		
H02	60°20.400'N, 146°44.520'W	879 feet	791 feet		
HB	60°20.094'N, 146°43.974'W	830 feet	747 feet		
H03	60°20.250'N, 146°45.246'W	886 feet	797 feet		
H04	60°20.112'N, 146°45.966'W	886 feet	797 feet		
H05	60°19.968'N, 146°46.710'W	886 feet	797 feet		
H06	60°19.812'N, 146°47.418'W	896 feet	806 feet		
H07	60°19.668'N, 146°48.138'W	909 feet	818 feet		
H08	60°19.470'N, 146°48.954'W	935 feet	842 feet		
H09	60°19.320'N, 146°49.782'W	1007 feet	906 feet		
H10	60°19.188'N, 146°50.508'W	1060 feet	954 feet		
H11	60°19.008'N, 146°51.228'W	1135 feet	1022 feet		
H12	60°18.888'N, 146°51.930'W	1194 feet	1075 feet		
H13	60°18.738'N, 146°52.656'W	909 feet	818 feet		
H14	60°18.588'N, 146°53.340'W	522 feet	470 feet		
H15	60°18.468'N, 146°53.994'W	276 feet	244 feet		
HC	60°18.120'N, 146°53.568'W	449 feet	404 feet		
H16	60°18.540'N, 146°54.552'W	85 feet	53 feet		
HD	60°17.982'N, 146°54.336'W	151 feet	119 feet		
M01	59°55.482'N, 147°48.630'W	295 feet	263 feet	Montague Strait	
MA	59°55.146'N, 147°49.092'W	220 feet	188 feet		
M02	59°55.848'N, 147°49.074'W	446 feet	401 feet		
MB	59°55.512'N, 147°49.512'W	420 feet	378 feet		
M03	59°56.178'N, 147°49.518'W	509 feet	458 feet		
M04	59°56.556'N, 147°49.956'W	577 feet	519 feet		
M05	59°56.886'N, 147°50.382'W	640 feet	576 feet		
M06	59°57.222'N, 147°50.826'W	705 feet	635 feet		
M07	59°57.546'N, 147°51.234'W	741 feet	667 feet		
M08	59°57.864'N, 147°51.636'W	768 feet	691 feet		
M09	59°58.152'N, 147°52.008'W	784 feet	706 feet		
M10	59°58.536'N, 147°52.458'W	778 feet	700 feet		
MC	59°58.182'N, 147°52.872'W	745 feet	671 feet		
M11	59°58.842'N, 147°52.866'W	472 feet	425 feet		
MD	59°58.518'N, 147°53.352'W	614 feet	553 feet		
LP01	59°58.854'N, 148°01.920'W	112 feet	80 feet	Southwest Passages	
LPA	59°58.488'N, 148°02.286'W	98 feet	66 feet		
LP02	59°59.082'N, 148°02.208'W	148 feet	116 feet		
LPB	59°58.758'N, 148°02.676'W	289 feet	257 feet		
EP03	59°59.472'N, 148°05.802'W	240 feet	208 feet		
EPA	59°59.064'N, 148°05.952'W	331 feet	299 feet		
EP04	59°59.700'N, 148°06.072'W	276 feet	244 feet		
EPB	59°59.364'N, 148°06.492'W	246 feet	214 feet		
POWP05	60°02.778'N, 148°07.470'W	312 feet	280 feet		
PWA	60°02.394'N, 148°07.698'W	289 feet	257 feet		
POWP06	60°02.796'N, 148°07.902'W	177 feet	145 feet		
PWB	60°02.418'N, 148°08.208'W	266 feet	234 feet		
BP07	60°06.906'N, 148°14.118'W	174 feet	142 feet		
BPA	60°07.128'N, 148°13.458'W	167 feet	135 feet		
NMS1	60°18.476'N, 147°40.044'W	131 feet	131 feet		Northern Montague Strait
NMS2	60°18.280'N, 147°25.330'W	154 feet	154 feet		
NMS3	60°22.657'N, 147°08.341'W	118 feet	118 feet		
KIP1	60°18.121'N, 148°00.944'W	344 feet	324 feet	Southern Knight Island Passage	
KIP2	60°18.050'N, 147°55.640'W	344 feet	324 feet		
GISL1	60°51.782'N, 147°13.369'W	164 feet	154 feet	Glacier Island - Chamberlain Bay	
Grav-1	60°41.370'N, 146°23.956'W	16 feet	Surface		
Grav-2	60°41.454'N, 146°23.496'W	75 feet	55 feet		
Grav-3	60°40.925'N, 146°23.018'W	146 feet	126 feet		
Grav-4	60°40.696'N, 146°22.561'W	195 feet	176 feet		
Grav-5	60°41.257'N, 146°24.580'W	7 feet	Surface		
Grav-6	60°41.033'N, 146°24.109'W	53 feet	34 feet		
Grav-7	60°40.811'N, 146°23.633'W	128 feet	108 feet		
Grav-8	60°40.580'N, 146°23.148'W	158 feet	138 feet		
Grav-9	60°40.362'N, 146°22.692'W	212 feet	192 feet		
Grav-10	60°40.970'N, 146°23.557'W	106 feet	86 feet		
RH1	60°36.987'N, 146°37.412'W	213 feet	203 feet	Port Gravina/Red Head	
RH2	60°38.175'N, 146°29.837'W	223 feet	223 feet		
CP1	60°32.465'N, 146°08.652'W	106 feet	81 feet		
CP2	60°32.733'N, 146°06.749'W	151 feet	126 feet	Hawkins Island/Canoe Pass/Cedar Bay	
CEDAR1	60°33.568'N, 146°01.978'W	110 feet	85 feet		

Acoustic receiver moorings symbolized by red dots in following maps.

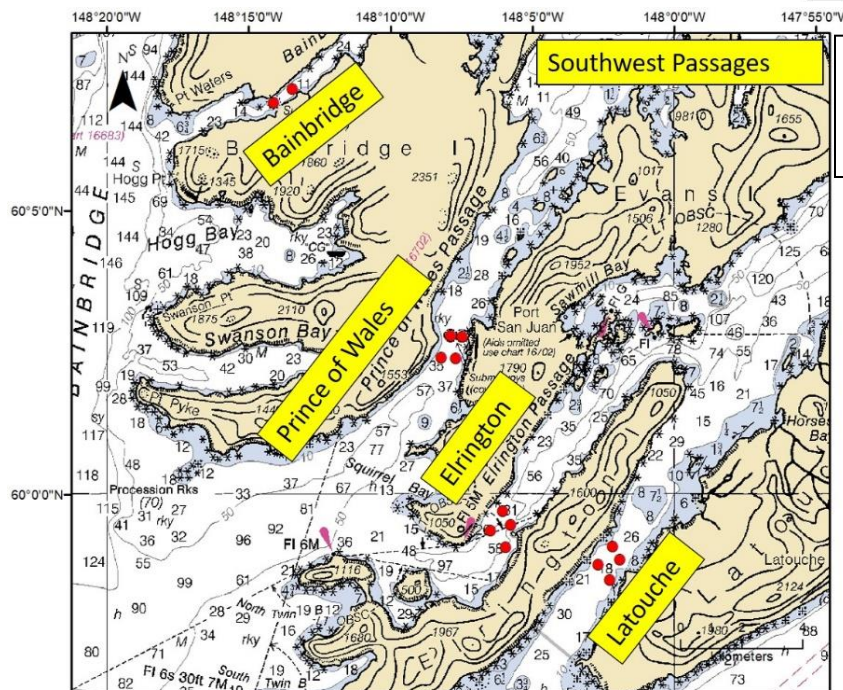


Acoustic receiver moorings located across Hinchinbrook Entrance

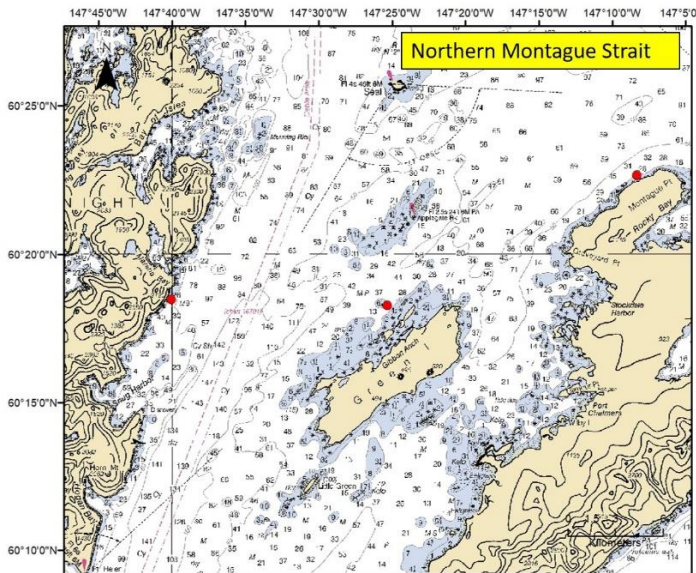
Acoustic receiver moorings located across Montague Strait



Acoustic receiver moorings located within the PWS Southwest Passages (Latouche, Elrington, Prince of Wales, and Bainbridge)

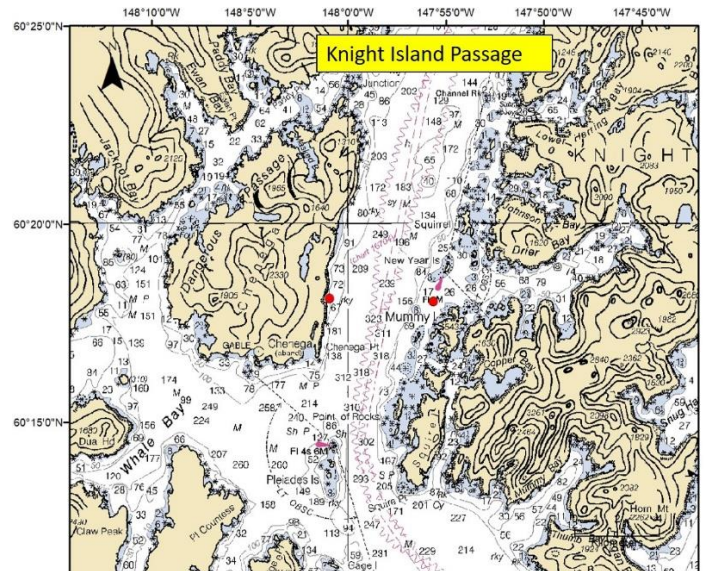


Acoustic receiver moorings symbolized by red dots in following maps.

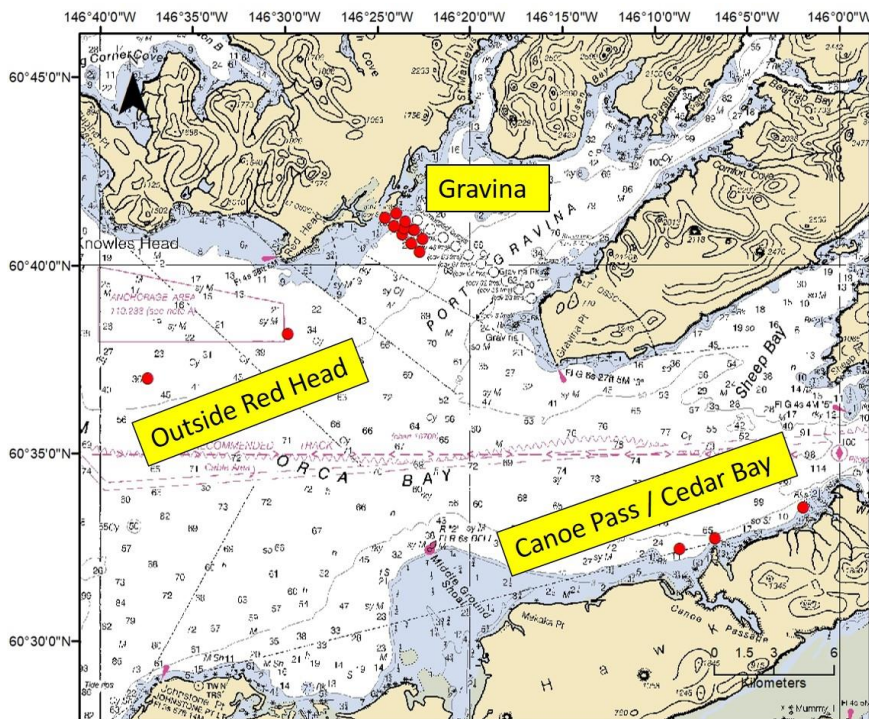


Acoustic receiver moorings located along Northern Montague Strait near Montague Point, Green Island, and Marsha Bay.

Acoustic receiver moorings located along Southern Knight Island Passage near Chenega Island and Mummy Island.



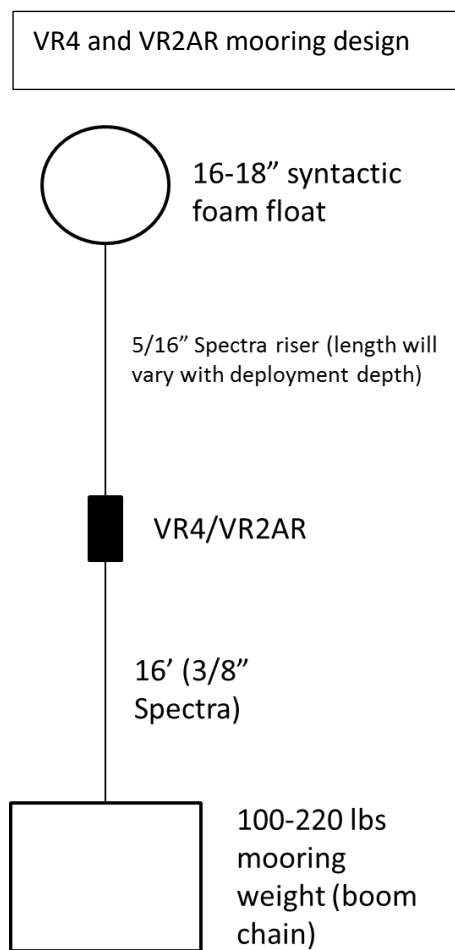
Acoustic receiver moorings located in Port Gravina, and Orca Bay - near Red Head, and along Hawkins Island near Canoe Pass and Cedar Bay.



Mooring Designs (see figures below)

Acoustic receiver moorings at major entrances (Hinchinbrook, Montague, and SW Passages) along with locations at Glacier Island, Gravina, Canoe Pass/Cedar Bay, and one receiver at Red Head are based on the “VR4 and VR2AR mooring design” diagram below. VR4’s are moored with approximately 220 lbs of boom chain and an 18” Hardball syntactic foam float. VR2AR’s are moored with approximately 100 lbs of boom chain and a 16” Hardball syntactic foam float. These floats provide enough buoyancy to reduce receiver tilt and counteract weight due to biofouling. Both VR4’s and VR2AR’s will tether to a mooring base with 3/8” Spectra and connect to floatation with 5/16” Spectra. Riser lengths will be at least 16’ or 10% of the mooring depth for moorings that exceed 326’ depth.

Moorings across Knight Island Passage, Montague Strait, and the other receiver at Red Head consist of a VR3 acoustic receiver with 220 lbs of boom chain as a mooring weight. These receivers are fit with specialized floatation collars to reduce receiver tilt and counteract weight due to biofouling. VR3’s will tether to a mooring base with 3/8” Spectra.



VR3 with floatation collar



VR2AR

VR4

***The point of contact for these moorings is Mary Anne Bishop (907) 424-5800 x 228 or Ben Gray (907) 424-5800 x 234 ***